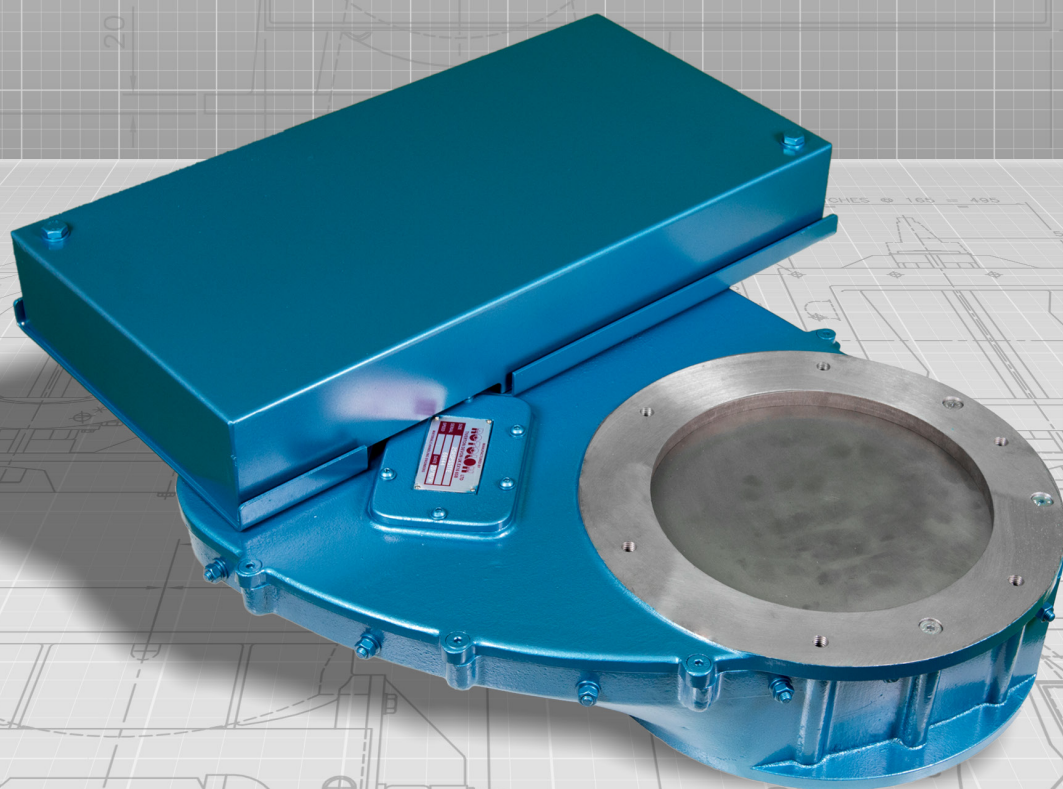




everything under control...



**ROTOLOK INDIA**

1375 Jeedi Drive  
Sector 28, Sri City  
Sathyavendu mandal  
Chittoor District  
AP - 517588  
India  
Tel: +91 (0) 8099 454384  
[www.rotolok.in](http://www.rotolok.in)  
[sales@rotolok.in](mailto:sales@rotolok.in)

ROTOLOK ROTOSLIDE



## INTRODUCTION

Slide Valves are used for controlling the flow of powders, pellets and granules from the inlets or outlets of equipment.

Rotolok have been making an extensive range of fabricated units to suit the general industrial fields and the Rotoslide, manufactured in cast aluminium with stainless steel trim, specifically caters for the food and chemical industries.

Manufactured in four basic sizes: 150, 200, 250 and 300mm of circular inlet design and of both manual and pneumatic versions.

## SPECIFICATIONS

### BODY

LM6 Cast Aluminium

### SLIDE PLATE

Stainless Steel

### SLIDE PLATE SUPPORT

Nylon studs supported by Stainless Steel screws

### HAND OPERATED

Positive easy action handle

### PNEUMATIC VERSION

One double acting cylinder rear clevis mounted

### SOLENOID VALVE (PNEUMATIC ONLY)

2 position 5 port single solenoid spring return

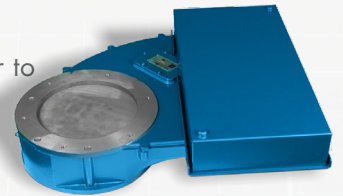
### LIMIT SWITCHES

Mounted to indicate open/closed position.  
Optional on manual version

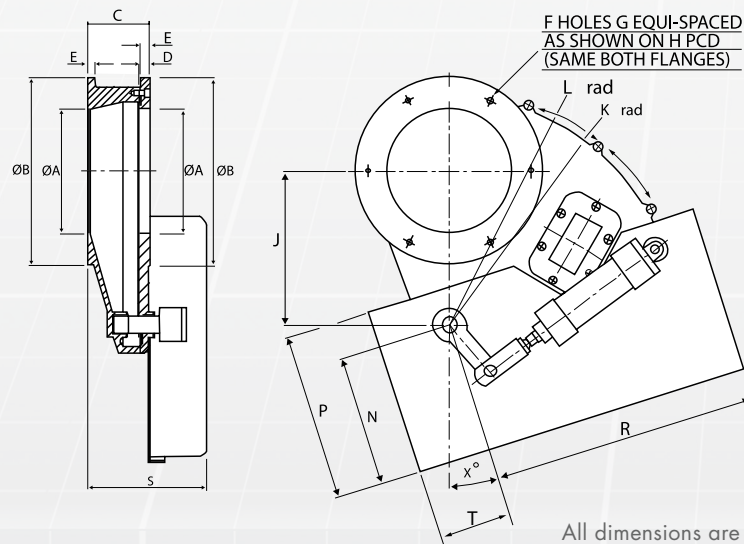
## WHY ROTOSLIDE?

Rotolok's Rotoslide has a different concept than the majority of slide valves on the market, in as much that it is truly jamfree and, whether it is hand or pneumatically operated, the basic principal of using a pivot holds the slide plate in a positive fixed position, while the slide extremity is supported by nylon studs on stainless steel pins.

The conventional slide of pushing a plate relies on exact centralisation of the cylinder to ensure the plate does not veer to the side causing jamming, the Rotoslide overcomes this impracticality. It has been designed to meet the health and safety acts requirements of the slide always bring completed enveloped, enclosed and dust tight to the surrounding environment.



## ROTOSLIDE



All dimensions are in mm unless otherwise stated

SIZES	A	B	C	D	E	F	G	H	J	K	L	N	P	R	S	T	X°
150	150	230	98	16	12	6	M10	195	162	254	268	220	267	425	197	115	0°
200	200	300	98	16	12	6	M12	260	245	365	380	208	266	425	197	115	17.5°
250	250	350	125	16	12	6	M12	310	316	460	474	245	316	440	224	170	17.5°
300	300	400	125	16	14	8	M12	360	398	566	580	245	316	440	224	170	15°