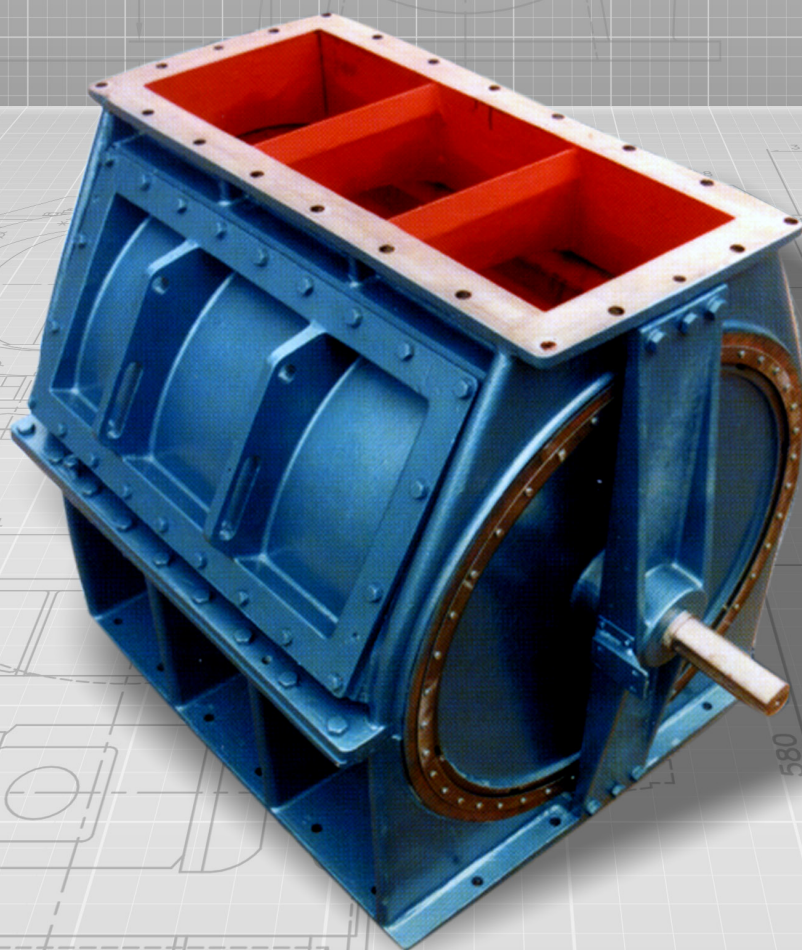




everything under control...



#### ROTOLOK INDIA

1375 Jeedi Drive  
Sector 28, Sri City  
Sathyavendu mandal  
Chittoor District  
AP - 517588  
India  
Tel: +91 (0) 8099 454384  
[www.rotolok.in](http://www.rotolok.in)  
[sales@rotolok.in](mailto:sales@rotolok.in)

ODDBALL ROTARY VALVES



## INTRODUCTION

This brochure simply outlines Rotolok 's range of special sized Rotary Airlocks. However, Rotolok manufactures even more than are listed here, including some round inlets to square outlets and the range is continuously being extended. For full specification, rotor selection and other options please refer to our Rotary Valve & Airlocks brochure. If you require a special valve that does not appear here please contact our sales office as we may design and manufacture to your requirements.

## SPECIFICATION

### BODIES

Cast Iron, Stainless Steel or Aluminium precision bored

### END COVERS

Cast Iron, Stainless Steel or Aluminium spigot located in body for concentricity

### BEARINGS

Generally sealed-for-life-ball type rigged outboard or high temperature type above 250°C

### ROTOR

Fabricated Mild or Stainless Steel

### SHAFT SEAL

Gland type with PTFE packing

### DRIVE

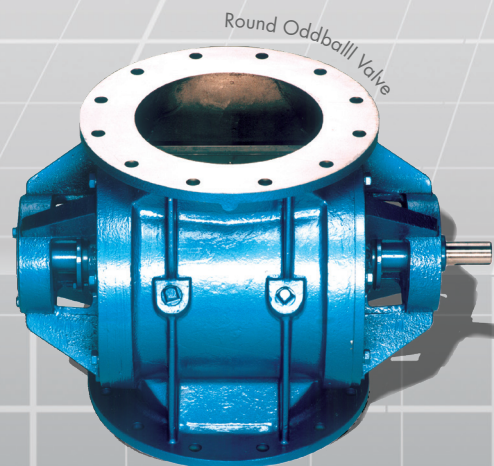
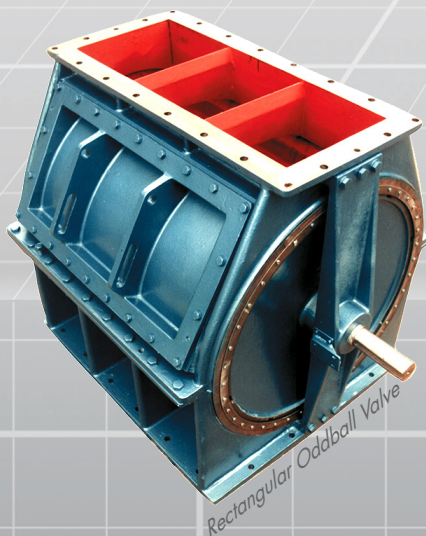
TEFC geared motor unit side wall mounted to valve body and complete with taper lock sprockets chain drive all in an enclosed guard.

## STANDARD FEATURES

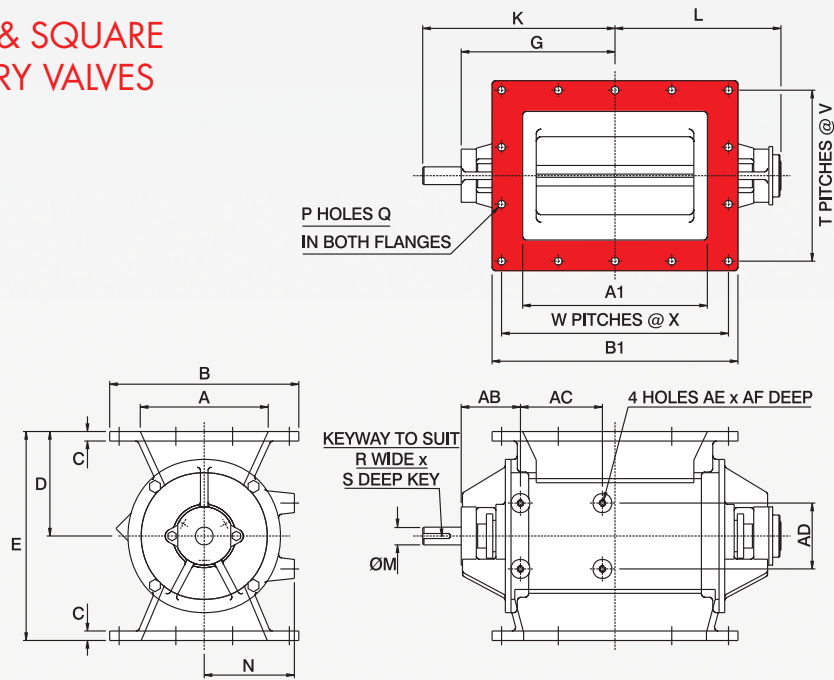
- Maximum number of blades in contact with body at one time without affecting throughput.
- Good throat opening at valve entry allowing for high pocket filling efficiency.
- Minimum clearance at rotor tips and sides with body.
- Robust body adequately stiffened to prevent distortion.
- Heavy shaft diameters minimising deflection.
- Outboard bearings for on-contamination.
- Packing gland type seals.
- Maximising valve speed to 25 RPM prolonging life, ensuring good throughput.
- Precision machining of components.

## OPTIONS

- Quick Release Rotors
- Direct Coupled Drives
- Air Purge Glands
- Body Vents
- Dropout Boxes
- V.S. Drives
- Speed Switches
- Flame-proof Motors
- Shear plate Deflectors
- Electroless Nickel Plating
- Hard Chrome Internals etc.



## RECTANGULAR & SQUARE ODDBALL ROTARY VALVES



All dimensions are in millimetres

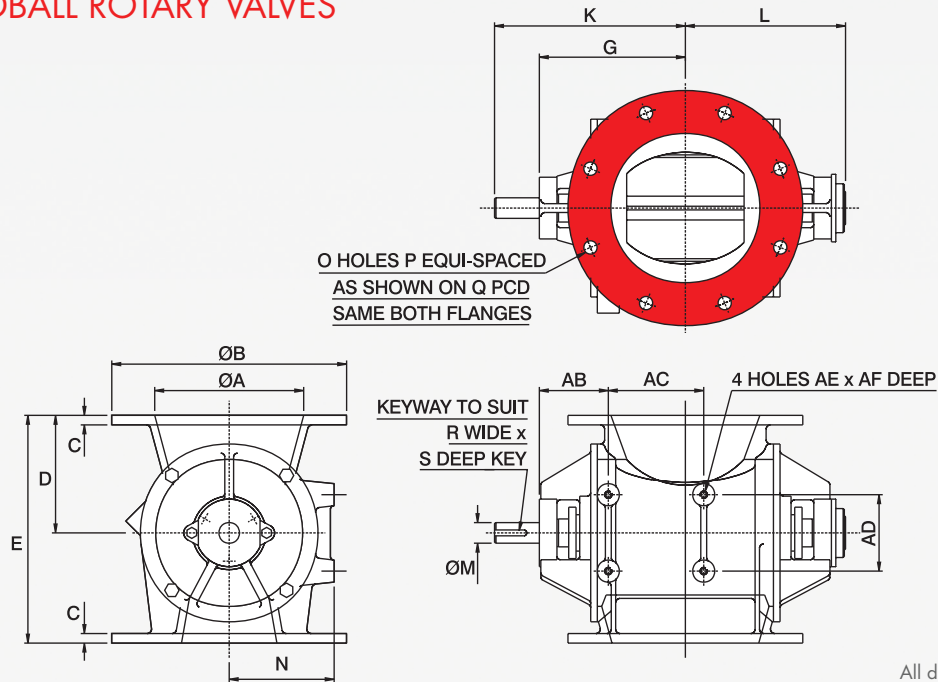
| NOMINAL INLET SIZE | A   | A1   | B   | B1   | C   | D     | E     | G   | K   | L   | M   | N   | P                   |
|--------------------|-----|------|-----|------|-----|-------|-------|-----|-----|-----|-----|-----|---------------------|
| 80 x 300           | 80  | 300  | 150 | 330  | 10  | 85    | 170   | 249 | 310 | 268 | 28  | -   | 6                   |
| 100 x 100          | 102 | 102  | 171 | 171  | 10  | 95    | 190.5 | 146 | 196 | 165 | 25  | 87  | 4                   |
| 100 x 150          | 102 | 152  | 164 | 212  | 10  | 121   | 241   | 185 | 246 | 204 | 28  | 126 | 8                   |
| 230 x 230          | 229 | 229  | 305 | 305  | 10  | 132   | 264   | 219 | 280 | 238 | 28  | 133 | 12                  |
| 125 x 250          | 127 | 254  | 203 | 312  | 12  | 134   | 267   | 227 | 288 | 246 | 28  | 126 | 12                  |
| 125 x 300          | 127 | 305  | 203 | 363  | 12  | 134   | 267   | 253 | 314 | 272 | 28  | 126 | 12                  |
| 200 x 460          | 200 | 460  | 300 | 560  | 15  | 165   | 330   | 329 | 427 | 348 | 35  | 133 | 16                  |
| 200 x 600          | 200 | 600  | 300 | 700  | 15  | 165   | 330   | 399 | 460 | 418 | 28  | 150 | 16                  |
| 230 x 270          | 233 | 270  | 330 | 370  | 16  | 205   | 410   | 247 | 321 | 266 | 40  | 185 | 12                  |
| 350 x 390          | 356 | 387  | 470 | 502  | 16  | 225.5 | 451   | 305 | 365 | 323 | 35  | 194 | 12                  |
| 300 x 1220         | 305 | 1219 | 419 | 1372 | 15  | 229   | 457   | 719 | 780 | 738 | 35  | 185 | 28                  |
| 250 x 250          | 250 | 250  | 365 | 365  | 14  | 250   | 500   | 263 | 326 | 282 | 40  | 207 | 12                  |
| 250 x 250          | 254 | 254  | 330 | 330  | 13  | 203   | 406   | 267 | 338 | 287 | 50  | 206 | 8                   |
| 250 x 350          | 250 | 350  | 350 | 450  | 12  | 240   | 480   | 270 | 329 | 289 | 35  | 220 | 12                  |
| 300 x 580          | 305 | 578  | 464 | 778  | 25  | 305   | 610   | 429 | 533 | 449 | 50  | 286 | 18                  |
| 460 x 815          | 460 | 815  | 610 | 965  | 18  | 305   | 610   | 526 | 607 | 545 | 50  | 290 | 18                  |
| NOMINAL INLET SIZE | Q   | R    | S   | T    | V   | W     | X     | AB  | AC  | AD  | AE  | AF  | m <sup>3</sup> /rev |
| 80 x 300           | 11  | 8    | 7   | 1    | 114 | 2     | 127   | -   | -   | -   | -   | -   | 0.0035              |
| 100 x 100          | 12  | 8    | 7   | 1    | 146 | 1     | 146   | 101 | 90  | 152 | M10 | 20  | 0.0016              |
| 100 x 150          | 10  | 8    | 7   | O/A  | O/A | O/A   | O/A   | 103 | 127 | 102 | M10 | 20  | 0.0054              |
| 230 x 230          | 12  | 8    | 7   | O/A  | O/A | O/A   | O/A   | 98  | 127 | 102 | M10 | 20  | 0.0063              |
| 125 x 250          | M8  | 8    | 7   | O/A  | O/A | O/A   | O/A   | 94  | 110 | 104 | M10 | 20  | 0.0075              |
| 125 x 300          | M8  | 8    | 7   | O/A  | O/A | O/A   | O/A   | 94  | 110 | 104 | M10 | 20  | 0.0089              |
| 200 x 460          | 14  | 10   | 8   | O/A  | O/A | 4     | 130   | 124 | 152 | 178 | M10 | 20  | 0.016               |
| 200 x 600          | 14  | 8    | 7   | O/A  | O/A | 4     | 165   | 94  | 130 | 104 | M10 | 20  | 0.0157              |
| 230 x 270          | 12  | 12   | 8   | 3    | 93  | 3     | 107   | 122 | 250 | 300 | M12 | 20  | 0.0151              |
| 350 x 390          | 14  | 10   | 8   | O/A  | O/A | O/A   | O/A   | 110 | 152 | 178 | M10 | 20  | 0.0271              |
| 300 x 1220         | 11  | 10   | 8   | 3    | 127 | O/A   | O/A   | 100 | 152 | 178 | M10 | 20  | 0.062               |
| 250 x 250          | 14  | 12   | 8   | 3    | 110 | 3     | 110   | 143 | 240 | 290 | M16 | 30  | 0.0207              |
| 250 x 250          | 11  | 14   | 9   | 2    | 152 | 2     | 152   | 143 | 248 | 203 | M10 | 25  | 0.0272              |
| 250 x 350          | 13  | 10   | 8   | 3    | 104 | 3     | 140   | 97  | 345 | 145 | M12 | 20  | 0.0308              |
| 300 x 580          | 18  | 14   | 9   | 3    | 133 | 5     | 143   | 156 | 546 | 330 | M16 | 40  | 0.0903              |
| 460 x 815          | 18  | 14   | 9   | 3    | 178 | 6     | 152   | 125 | 415 | 140 | M16 | 30  | 0.155               |

\*O/A = On application

Dimensions are approximate and subject to change without notice  
Planning-in detail for general guidance only  
(To cover safety aspects ask for our safety leaflets)  
Drillings are Rotolok standards. Variations can be made.



## ROUND ODDBALL ROTARY VALVES



All dimensions are in millimetres

| NOMINAL INLET Ø x BORE | øA   | øB  | C  | D   | E   | G   | K   | L   | øM  | N   | O  | P  | Q    | R  | S | AB  | AC  | AD  | AE  | AF | ft <sup>3</sup> /rev |
|------------------------|------|-----|----|-----|-----|-----|-----|-----|-----|-----|----|----|------|----|---|-----|-----|-----|-----|----|----------------------|
| 12.5 x 19              | 12.7 | 89  | 7  | 53  | 106 | 44  | 74  | 55  | 9.5 | -   | 4  | 16 | 60.5 | 3  | 3 | -   | -   | -   | -   | -  | 87 x 10              |
| 150 x 170              | 150  | 285 | 12 | 130 | 260 | 198 | 250 | 217 | 28  | 110 | 8  | 22 | 240  | 8  | 7 | 125 | 146 | 100 | M10 | 18 | 0.11                 |
| 150 x 200              | 152  | 254 | 8  | 124 | 248 | 174 | 235 | 193 | 28  | 127 | 6  | 11 | 222  | 8  | 7 | 94  | 130 | 104 | M10 | 20 | 0.167                |
| 175 x 210              | 175  | 315 | 12 | 160 | 320 | 220 | 270 | 239 | 28  | 130 | 8  | 22 | 270  | 8  | 7 | 125 | 190 | 100 | M10 | 18 | 0.218                |
| 200 x 260              | 200  | 340 | 12 | 185 | 370 | 255 | 315 | 274 | 28  | 160 | 8  | 22 | 295  | 8  | 7 | 138 | 234 | 125 | M12 | 18 | 0.423                |
| 200 x 250              | 203  | 320 | 12 | 156 | 311 | 219 | 280 | 238 | 28  | 175 | 8  | 10 | 280  | 8  | 7 | 94  | 250 | 104 | M10 | 20 | 0.394                |
| 200 x 300              | 205  | 343 | 19 | 220 | 465 | 260 | 320 | 279 | 35  | 185 | 8  | 22 | 298  | 10 | 8 | 100 | 320 | 140 | M16 | 30 | 0.75                 |
| 250 x 310              | 250  | 395 | 15 | 215 | 430 | 280 | 335 | 294 | 32  | 190 | 12 | 18 | 335  | 10 | 8 | 138 | 284 | 125 | M10 | 22 | 0.705                |
| 250 x 310              | 250  | 406 | 15 | 215 | 430 | 280 | 335 | 294 | 32  | 190 | 12 | 25 | 362  | 10 | 8 | 138 | 284 | 125 | M10 | 22 | 0.705                |
| 300 x 380              | 300  | 445 | 16 | 260 | 520 | 330 | 430 | 354 | 50  | 225 | 12 | 22 | 400  | 14 | 9 | 150 | 180 | 125 | M12 | 22 | 1.33                 |
| 350 x 450              | 350  | 505 | 21 | 305 | 610 | 365 | 425 | 384 | 50  | 270 | 16 | 22 | 460  | 14 | 9 | 155 | 420 | 125 | M12 | 22 | 2.216                |

## CAPACITIES

The capacities of the Oddball valves are in the last column of the valve size charts, in ft<sup>3</sup> per rotor revolution. See standard Rotary Valve capacity chart for comparisons at various valve speeds.

